

An aerial photograph of West Kowloon, Hong Kong, showing a mix of existing urban buildings and a new architectural rendering. A teal horizontal band is overlaid across the middle of the image. The rendering depicts a modern development with a central walkway, green spaces, and several large, angular buildings. The water of the harbor is visible on the left and bottom edges.

westKowloon

西九文化區

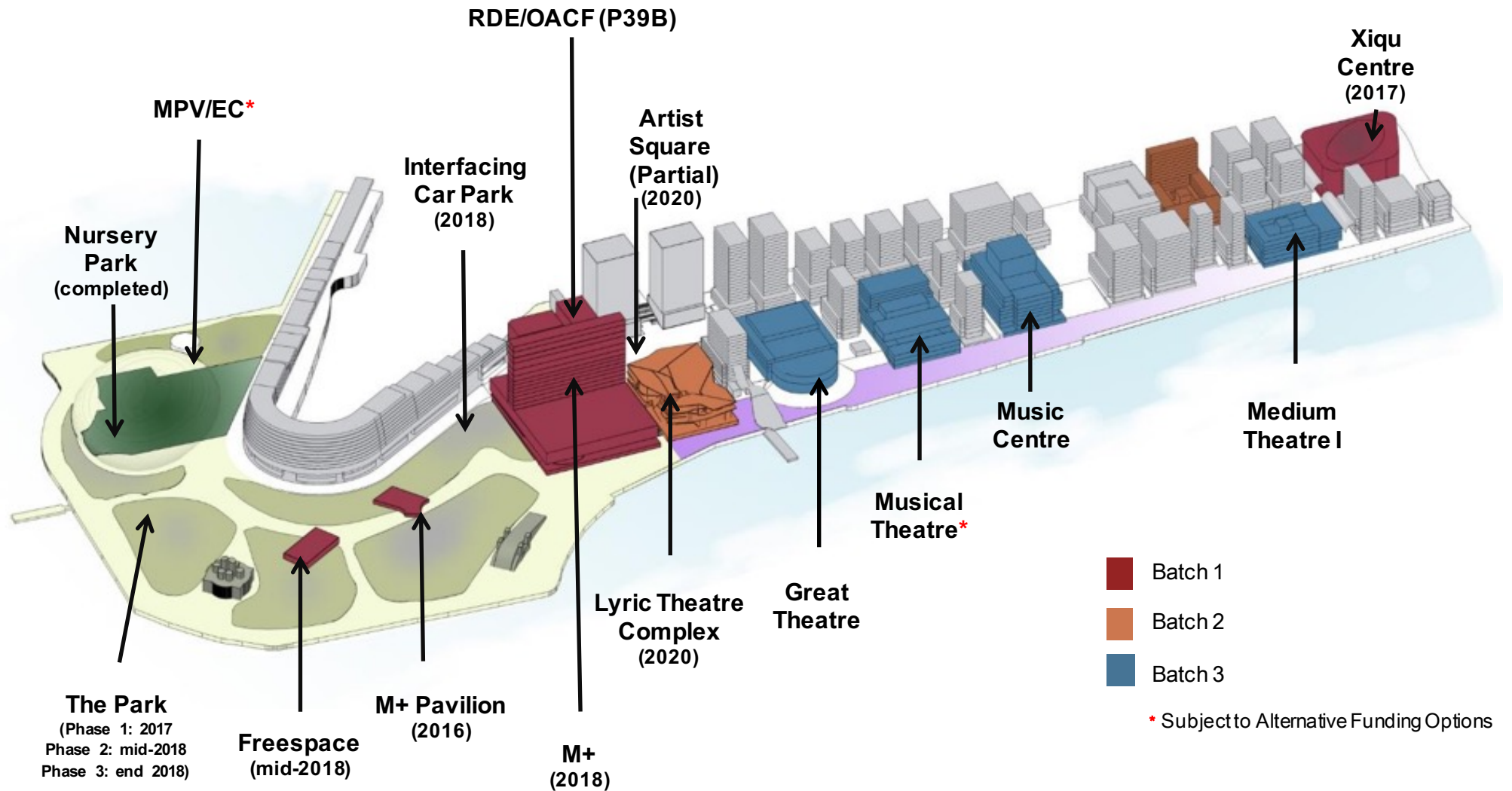
Powering Ahead

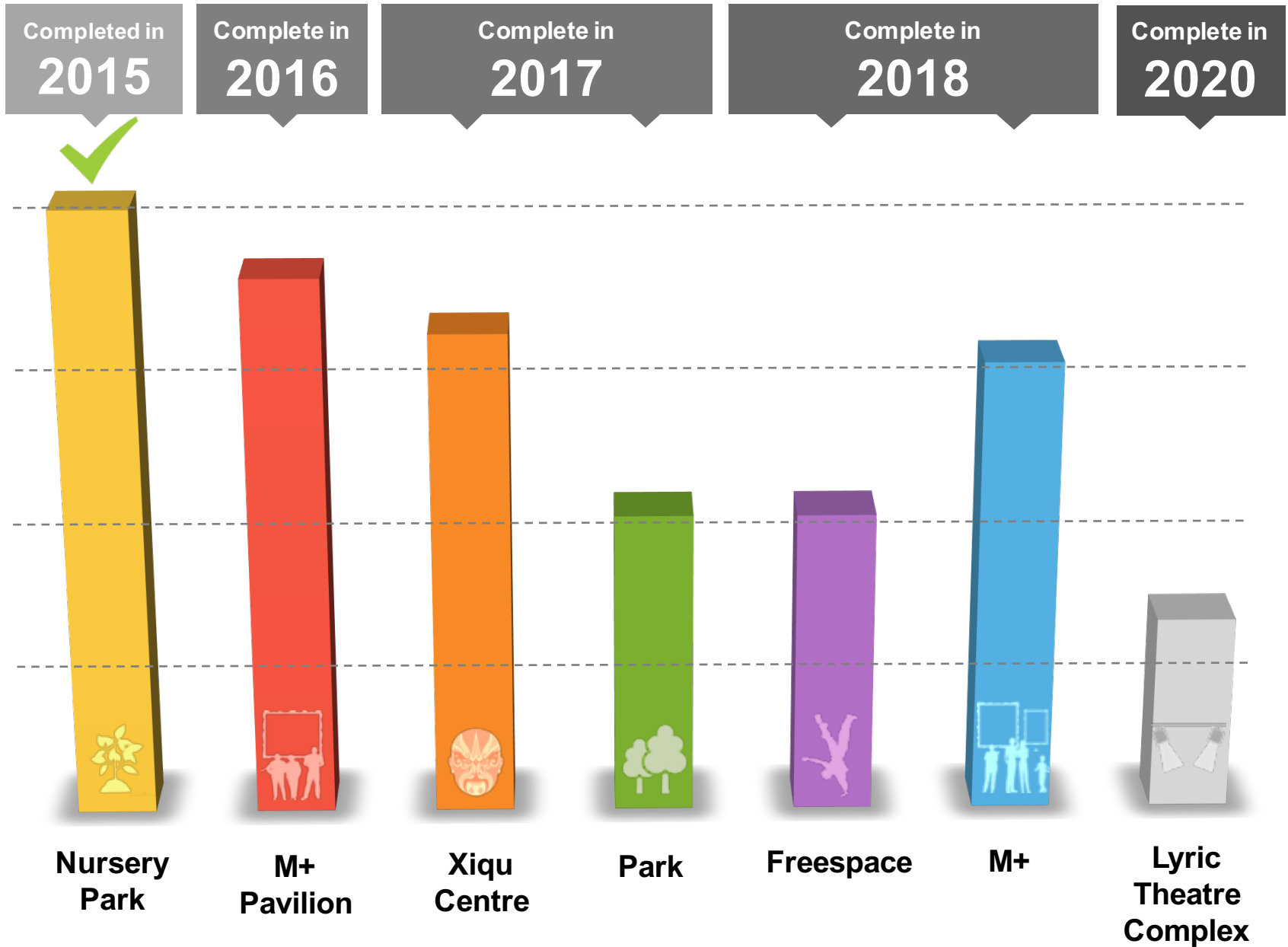
Duncan Pescod
Chief Executive Officer
West Kowloon Cultural District Authority

Key milestones of WKCD development

2008	Establishment of West Kowloon Cultural District Authority (WKCDA) Endowment of HK\$21.6 billion for WKCD project
2009-11	Three-stage public engagement exercise Submission of proposed Development Plan
2012	WKCDA started to launch its own arts programmes Appointment of Xiqu Centre design team Major collection donation received
2013	Approval of Development Plan Appointment of M+ design team Groundbreaking of Xiqu Centre Announcement of pragmatic approach to implement WKCD project
2014	Appointment of design teams for M+ Pavilion and the Park Unveiling of Park concept design Construction of M+ began Public survey on Park management Approval of planning application for minor relaxation of the maximum gross floor area (GFA) and building height restrictions
2015	Public consultation on WKCD Public Open Space Bylaw Opening of the temporary Nursery Park M+ Pavilion was 'topped out'

Completion Timeframe of WKCD Facilities





Opened July 2015

Nursery Park

A temporary park for public enjoyment



Nursery Park

A temporary park for public enjoyment



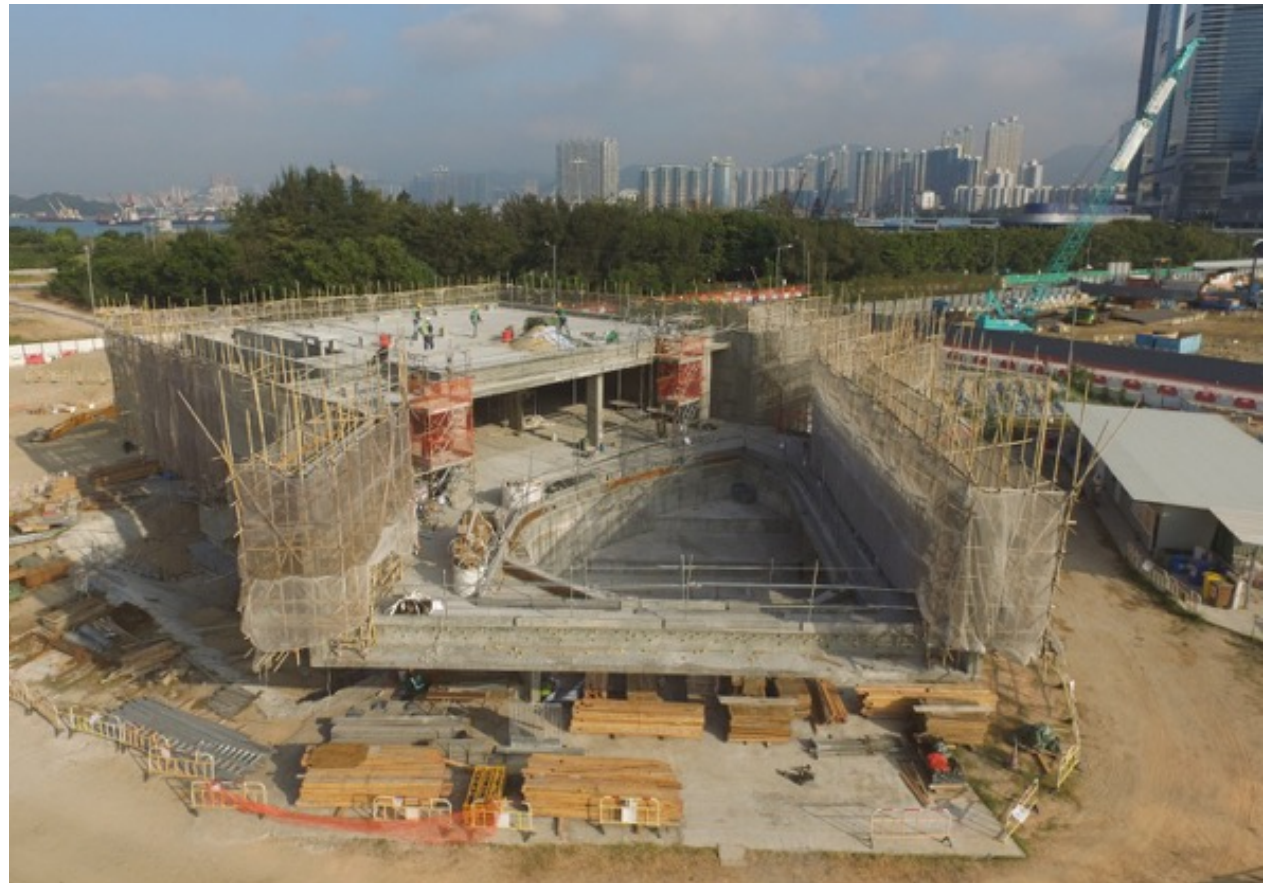
M+ Pavilion

For independent small-scale exhibitions and events



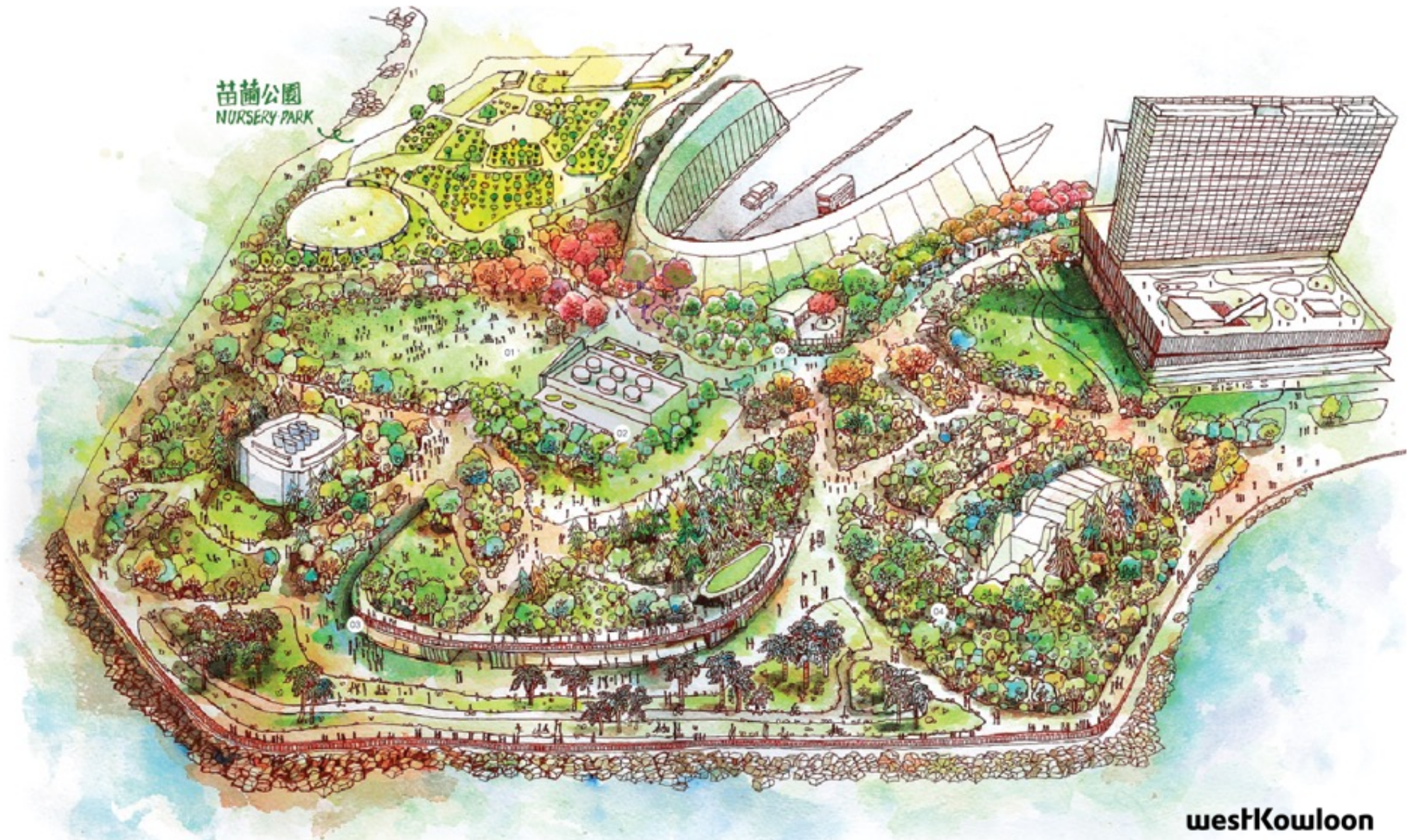
M+ Pavilion

For independent small-scale exhibitions and events



The Park

A place to inspire, promote and encourage cultural pursuits for all



westKowloon

西九文化區

The Park

A place to inspire, promote and encourage cultural pursuits for all

Designed by Dennis Lau & Ng Chun Man Architects & Engineers (HK) Ltd, with West 8 (Netherlands) and ACLA (HK)



West Kowloon Cultural District



Xiqu Centre

A world class venue for Chinese opera performances



Designed by Bing Thom Architects and Ronald Lu & Partners

westKowloon

西九文化區

Xiqu Centre

A world class venue for Chinese opera performances



Xiqu Centre

Lifting of the theatre structure





M+

A new museum for visual culture in Hong Kong

Designed by Herzog & de Meuron, with Hong Kong-based TFP Farrells and Ove Arup & Partners HK

P39B

westKowloon
西九文化區

M+

A new museum for visual culture in Hong Kong





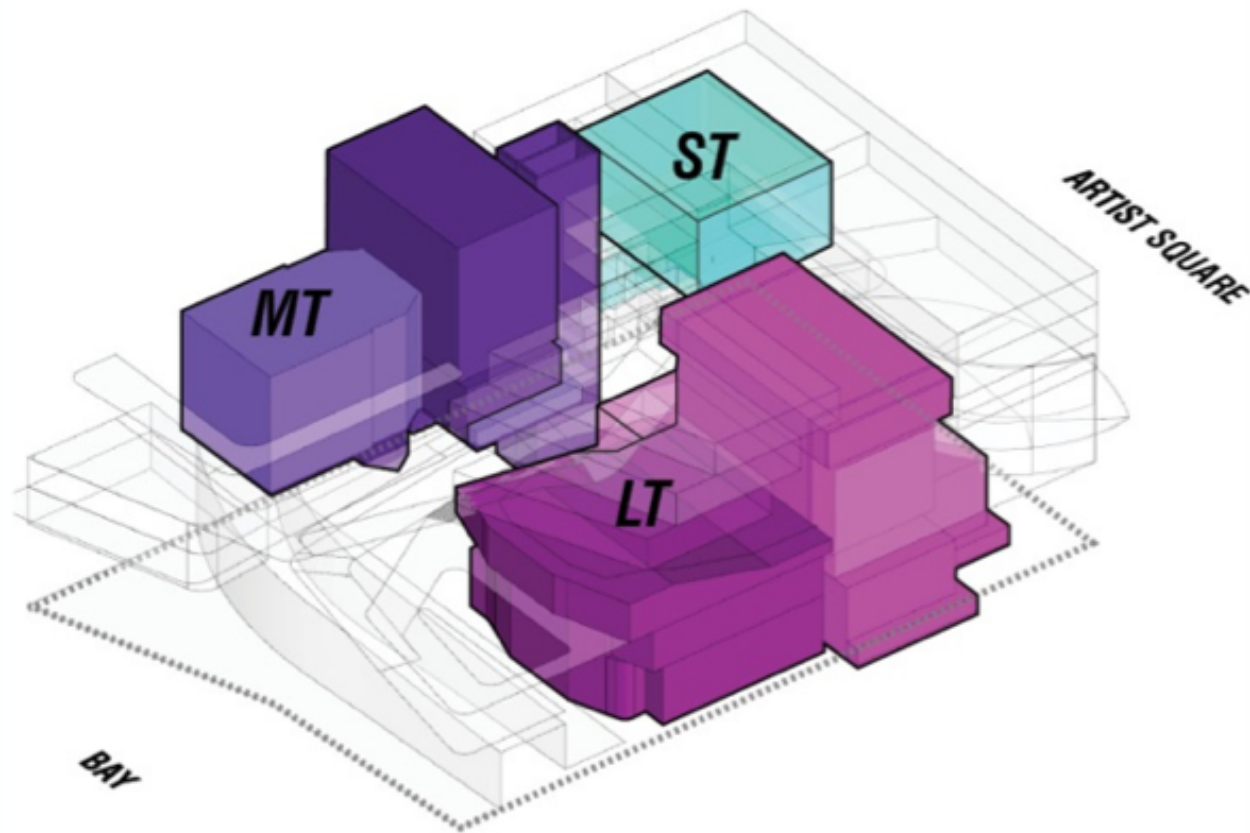
A new museum for visual culture in Hong Kong



Lyric Theatre Complex

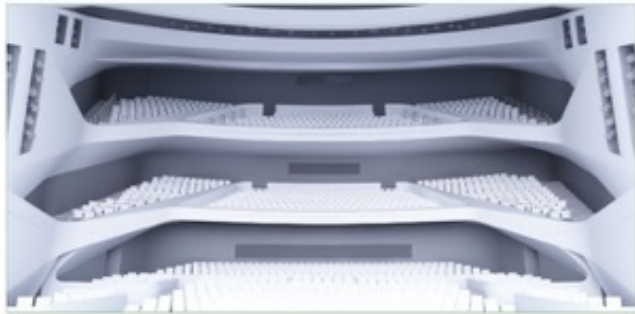
A centre of excellence showcasing the best of Hong Kong and international dance and theatre.

Designed by UNStudio (Netherlands) and AD+RG (Hong Kong)



Preliminary scheme only and architectural design needs to be further developed.

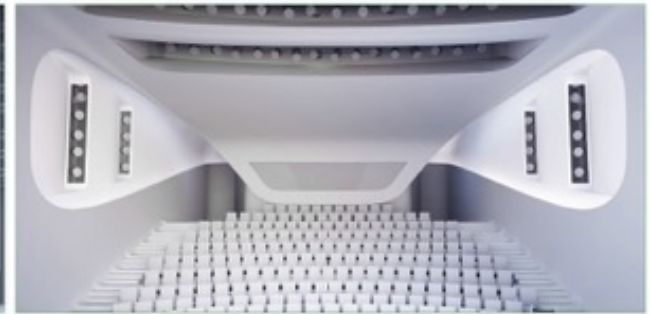
Lyric Theatre Complex



L Lyric Theater



M Medium Theater



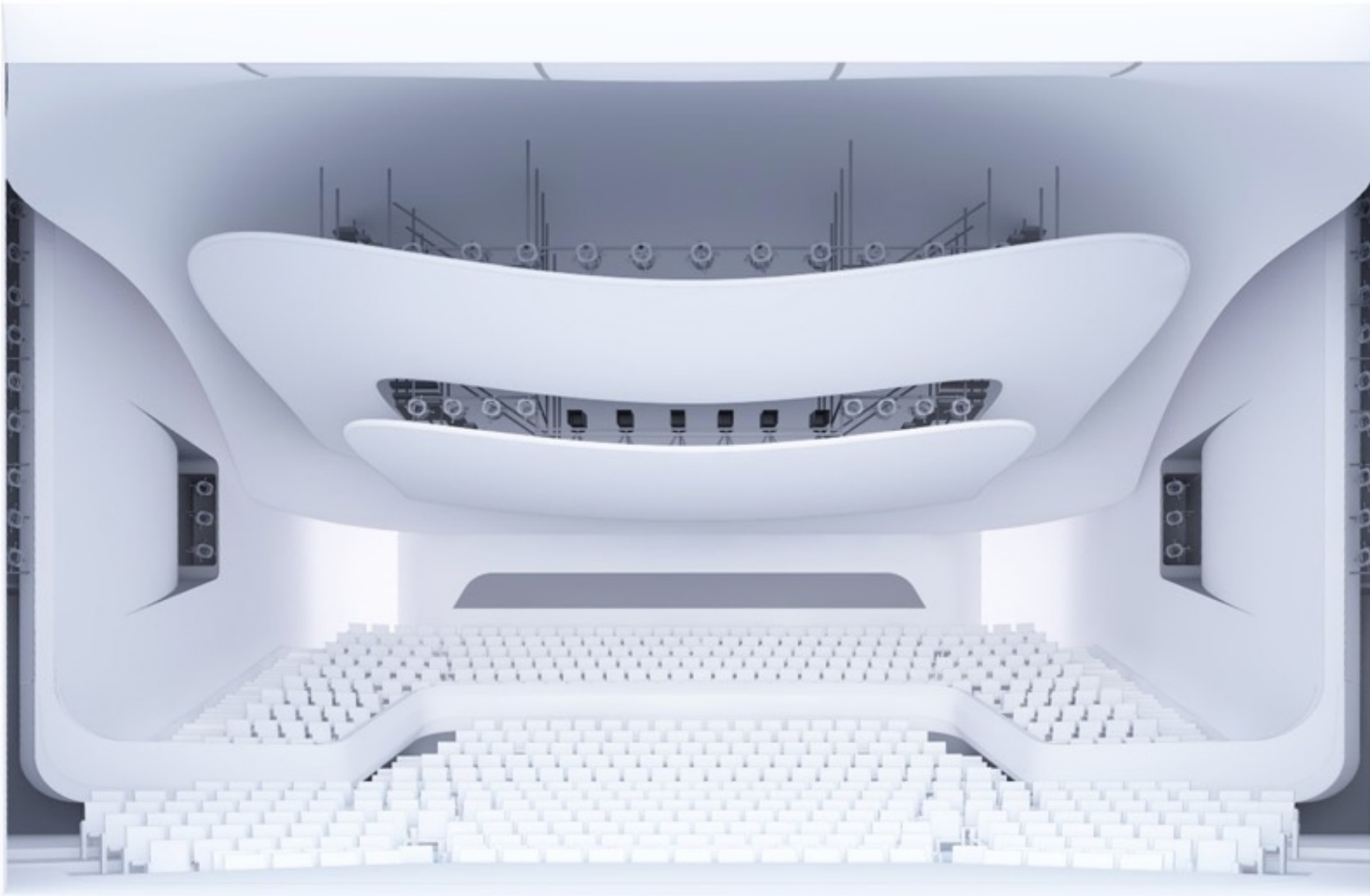
S Small Theater

Preliminary scheme only and architectural design needs to be further developed.

westKowloon

西九文化區

Lyric Theatre Complex



Preliminary scheme only and architectural design needs to be further developed.

westKowloon

西九文化區

破格新時代小劇場
台灣國光劇團

The Ghost Seller
賣鬼狂想



26-27.02.2016

高山劇場新翼演藝廳
Auditorium, Ko Shan Theatre New Wing

His Butterflies
香天·生死相許
蝴蝶夢
(捌拾大版)

浪漫唯美劇場演唱會
桃花源粵劇工作舍



26-27.02.2016

高山劇場新翼演藝廳
Auditorium, Ko Shan Theatre New Wing



M+

SIGG COLLECTION

FOUR DECADES OF
CHINESE CONTEMPORARY ART

23.2 – 5.4.2016

ARTISTREE

CREDIT SUISSE
瑞信

Leading Sponsor



Freespace Happening





Freespace | 自由
Happening | 約

Thank You

westKowloon

西九文化區